

SCALE 1"=100'

MARCH 12, 2010

Esplanade

W050/82

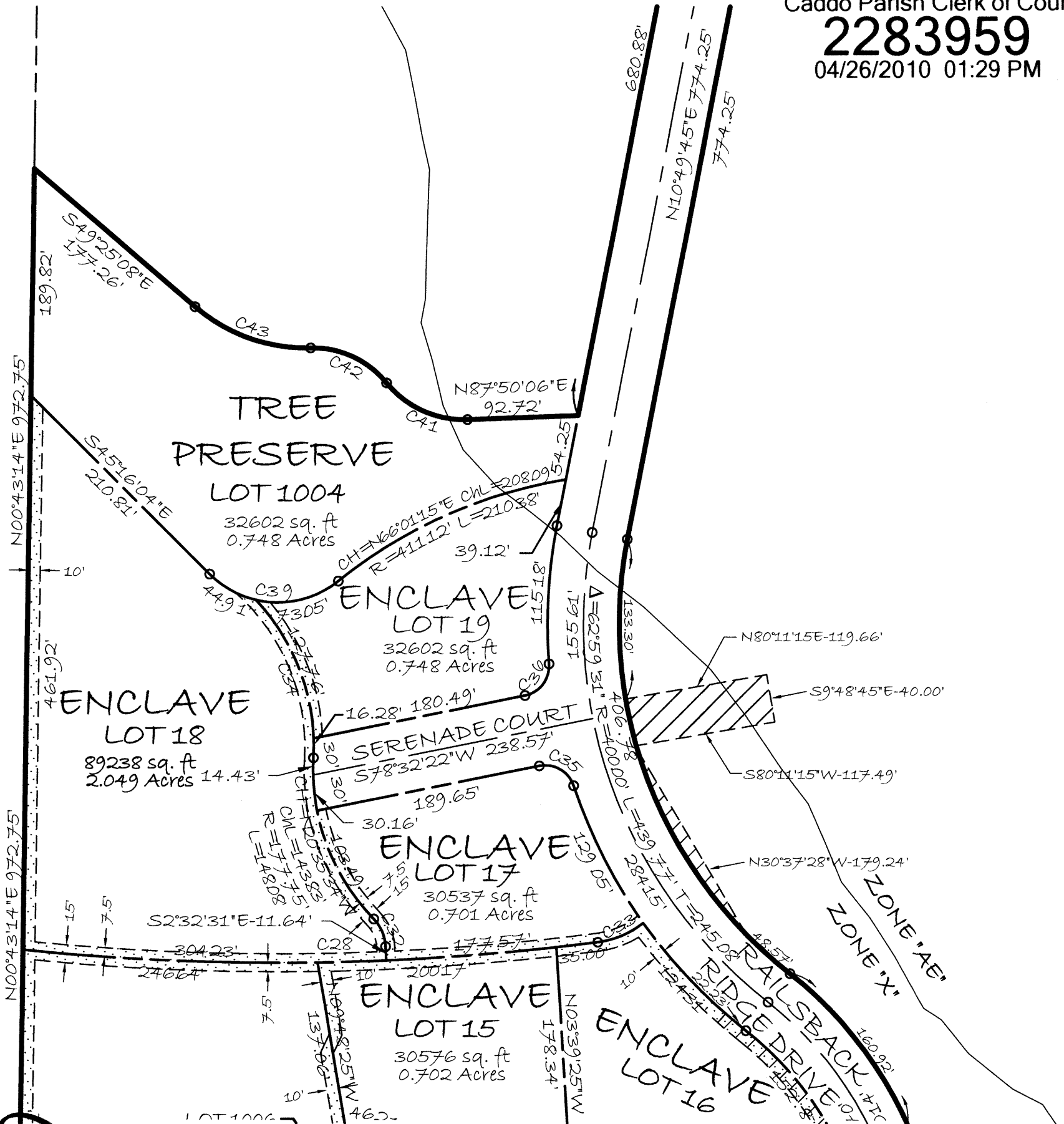
Unit 2, Railsback District

A PLANNED UNIT DEVELOPMENT LOCATED IN SECTIONS 9 and 38, TOWNSHIP 16 NORTH, RANGE 13 WEST, CADDO PARISH, LOUISIANA. TOTAL AREA CONTAINED IN THIS UNIT IS 33.535 ACRES.

Gary Loftin
Caddo Parish Clerk of Court
2283959
04/26/2010 01:29 PM

SEE SHEET 6

UNDE



SEE SHEET 4

UTILITY DEDICATION
SEE SHEET 8

SEE SHEET 8 FOR CURVE DATA

[Signature]
 LARKIN DEVELOPMENT AT RAILSBACK, L.L.C.
 TIMOTHY A. LARKIN
 PRESIDENT / MANAGING MEMBER
 Date: 3/12/10

METROPOLITAN PLANNING COMMISSION,
 SHREVEPORT/CADDO PARISH
[Signature]
 CHARLES H. KIRKLAND
 DIRECTOR
 Date: 3-31-10

CITY OF SHREVEPORT
[Signature]
 RON NORWOOD
 CITY ENGINEER
 Date: 3-18-10

LAND SURVEYOR:
MOHR AND ASSOCIATES, INC.

[Signature] 3/12/10
 JOHNNIE A. CRAIG
 REGISTERED PROFESSIONAL LAND SURVEYOR
 REGISTRATION NUMBER 4587

