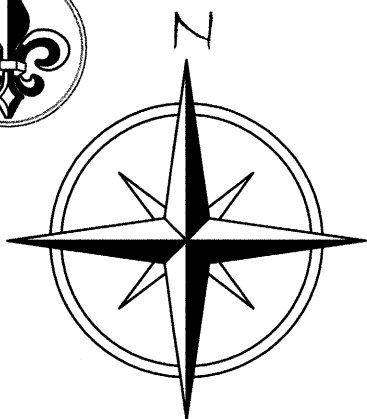


W050/80

Esplanade

Unit 2, Railsback District

A PLANNED UNIT DEVELOPMENT LOCATED IN SECTIONS 9 and 38, TOWNSHIP 16 NORTH, RANGE 13 WEST, CADDO PARISH, LOUISIANA. TOTAL AREA CONTAINED IN THIS UNIT IS 33.535 ACRES.

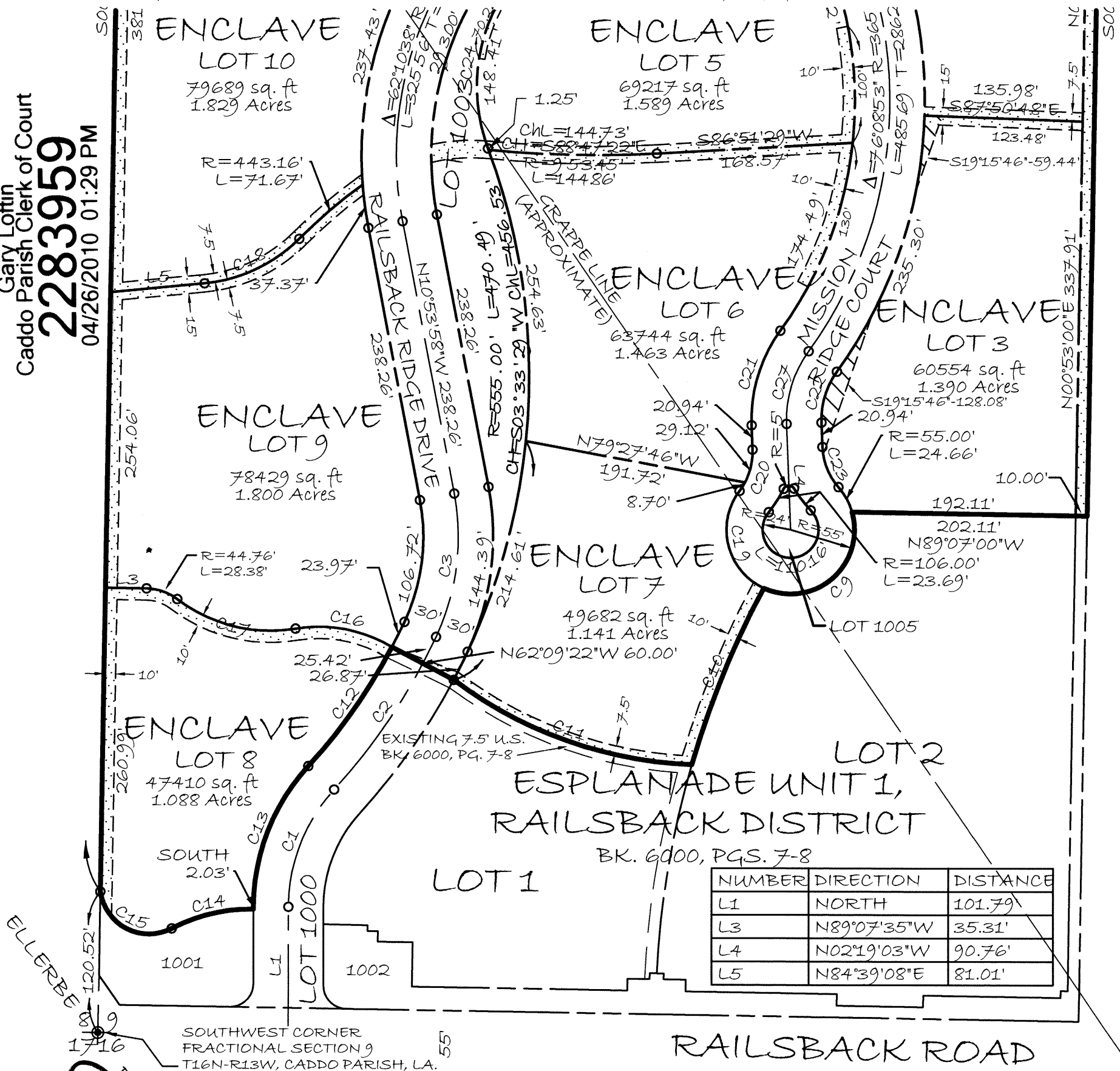


SCALE 1"=100'

MARCH 12, 2010

SEE SHEET 4

Gary Loftin
Caddo Parish Clerk of Court
2283959
04/26/2010 01:29 PM



NUMBER	DIRECTION	DISTANCE
L1	NORTH	101.79'
L3	N89°07'35"W	35.31'
L4	N02°19'03"W	90.76'
L5	N84°39'08"E	81.01'

UTILITY DEDICATION
SEE SHEET 8

SEE SHEET 8
FOR CURVE DATA

LARKIN DEVELOPMENT AT RAILSBACK, L.L.C.

Timothy A. Larkin
TIMOTHY A. LARKIN
PRESIDENT / MANAGING MEMBER
Date 3/12/10

METROPOLITAN PLANNING COMMISSION,
SHREVEPORT / CADDO PARISH
Charles H. Kirkland
Date 3-31-10

CHARLES H. KIRKLAND
DIRECTOR
Date

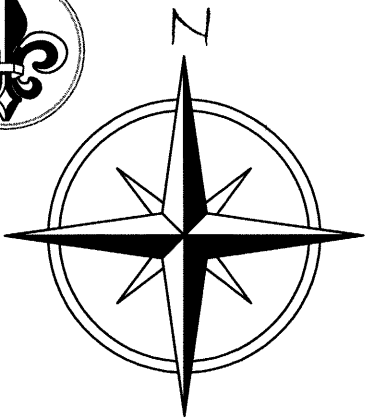
CITY OF SHREVEPORT
Ron Norwood
Date 3-18-10

RON NORWOOD
CITY ENGINEER
Date

LAND SURVEYOR:
MOHR AND ASSOCIATES, INC.

Johnnie A. Craig 3/12/10
JOHNNIE A. CRAIG
REGISTERED PROFESSIONAL LAND SURVEYOR
REGISTRATION NUMBER 4587





SCALE 1"=100'

MARCH 12, 2010

Esplanade

6050/81

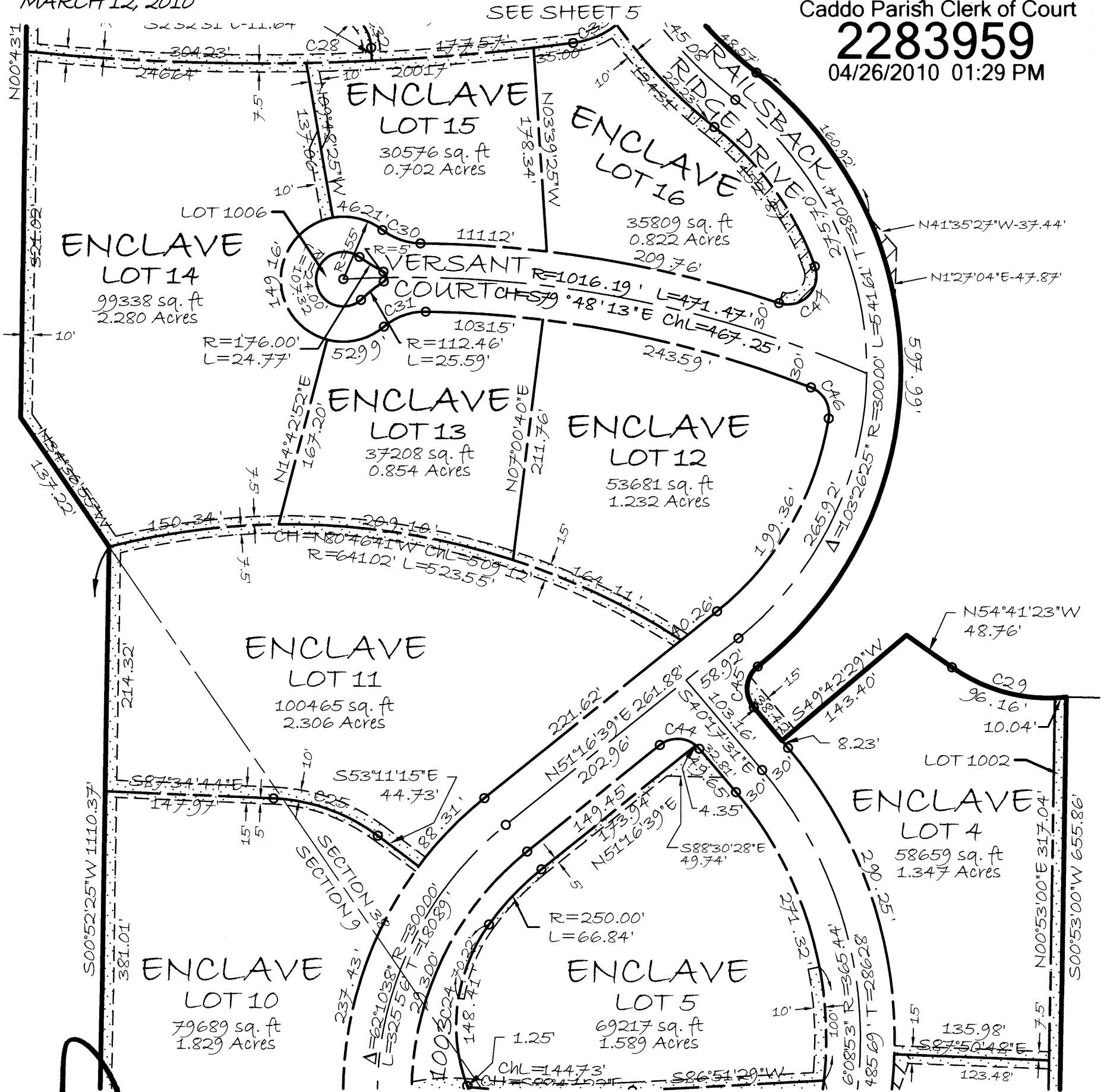
Unit 2, Railsback District

A PLANNED UNIT DEVELOPMENT LOCATED IN SECTIONS 9 and 38, TOWNSHIP 16 NORTH, RANGE 13 WEST, CADDO PARISH, LOUISIANA. TOTAL AREA CONTAINED IN THIS UNIT IS 33.535 ACRES.

Gary Loftin
Caddo Parish Clerk of Court

2283959

04/26/2010 01:29 PM



SEE SHEET 3

UTILITY DEDICATION
SEE SHEET 8

SEE SHEET 8
FOR CURVE DATA

LARKIN DEVELOPMENT AT RAILSBACK, L.L.C.

[Signature]
TIMOTHY A. LARKIN
PRESIDENT / MANAGING MEMBER
Date: 3/12/10

METROPOLITAN PLANNING COMMISSION,
SHREVEPORT/CADDOPARISH
[Signature]
CHARLES H. KIRKLAND
DIRECTOR
Date: 3-31-10

[Signature]
CITY OF SHREVEPORT
RON NORWOOD
CITY ENGINEER
Date: 3-18-10

LAND SURVEYOR:
MOHR AND ASSOCIATES, INC.

[Signature]
JOHNNIE A. CRAIG
REGISTERED PROFESSIONAL LAND SURVEYOR
REGISTRATION NUMBER 4587

